

The Explorer



A tiny spaceship?

One day, I was flying around when I heard a voice from below...

AH!

An alien!?



Help!



I am trying to send them a message, but this satellite isn't working!

I was told to come here to meet my parents if I got lost.

I was told to come here to meet my parents if I got lost.



NG ENG TENG

Cultural Medallion recipient Ng Eng Teng is one of Singapore's leading sculptors.

His sculpture, *The Explorer*, was commissioned to commemorate the new millennium.

The Explorer is part of the National Collection and was unveiled at the Singapore Art Museum in December 1999.



Oh dear!
I don't think this
is a satellite!

It is a sculpture
called *The Explorer*,
by Ng Eng Teng!

Are you sure you were
supposed to meet at
this sculpture?

Yes. I was told to
come here if I
ever got lost in
the galaxy.

Since this isn't a satellite,
how will my family know
how to find me?

There is a larger version of this
sculpture in another place.

The meeting
place could be
there instead!



*The smaller version of this sculpture may be found at Serangoon Garden Circus at Serangoon Garden Way.



Let's go find your parents!

As we approached the Singapore Art Museum, I was dumbfounded.



Wait, where has the outdoor sculpture gone?

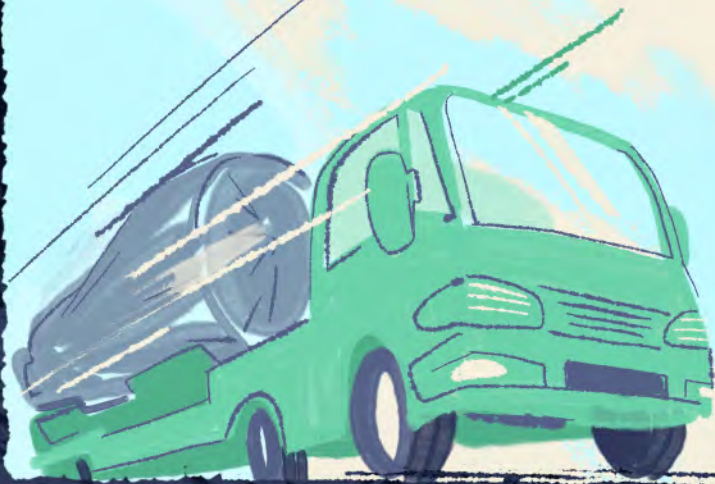
Isn't it a 7-metre-high sculpture made of heavy cement-fondu and steel?

How could it have just disappeared?

Let's go!



Taking flight, I followed the lorry. I needed to help the alien get back home!



Does the sculpture really look like something you see in outer space?

Yes, beyond the fluffy clouds.

I have seen huge planets, satellites and curious astronauts making their mark on the moon with flags.



The artist was so innovative to depict all of this! No wonder you were told that the sculpture was the meeting point.

At that moment, I had a strong desire to travel through the galaxy freely like humans.



There are an infinite number of discoveries that have yet to be made in outer space.

Soon, we arrived at our destination.

The Explorer's new home is the Science Centre Singapore!

Maybe we can get in touch with your family here!

It was time to get my alien friend home.

What can we do to get your family's attention?

Maybe we could try climbing to the top of the sculpture!

Let's try to capture your family's attention this time!



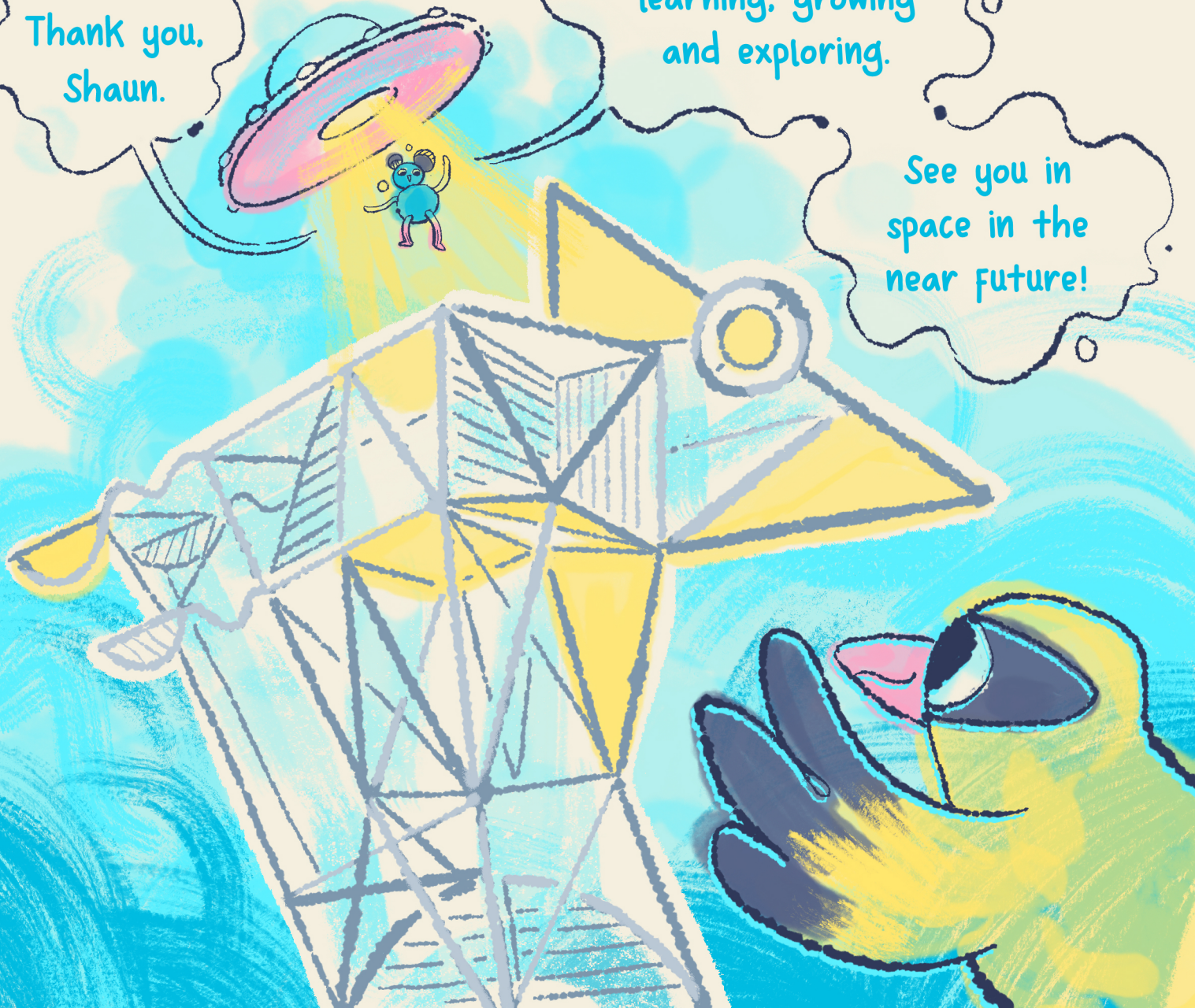
There they are!



Thank you,
Shaun.

I hope you continue
learning, growing
and exploring.

See you in
space in the
near future!



Though my new friends
have returned home to
their planet

I hope they will
travel and
explore the
galaxy once more



And return here
to visit one day.

Over the clouds
Beyond the planets

Our world travels
and explores

The galaxy.



The Explorer COMIC

THE EXPLORER, 1999 NG ENG TENG

Ciment fondu, stainless steel
and gold leaf
700 x 575 x 350 cm
Collection of the Singapore
Art Museum

The Explorer is currently
on loan to the Science
Centre Singapore, where it is
on display in the Kinetic Garden
while the Singapore Art Museum
undergoes redevelopment.



ABOUT THE ILLUSTRATOR

Anna Goh / Annuendo loves
to explore ideas, spaces, and the
idea of (outer) space. She draws
her inspiration from the places
around her, weird discoveries
and the unknown. She has three
pet cats named Brownie, Beth
and Boba, and her favourite
snack is cherry tomatoes.



ABOUT THE SINGAPORE ART MUSEUM

Singapore Art Museum is a contemporary art
museum that encompasses a worldwide
perspective on contemporary art practice.
Since its opening in January 1996, SAM has
built up one of the most important collections
of contemporary art from Southeast Asia.

Published by Singapore Art Museum | ©2021 Singapore Art Museum
Written and produced by Education and Programmes, Singapore Art Museum
Illustration by Anna Goh / Annuendo

www.singaporeartmuseum.sg

